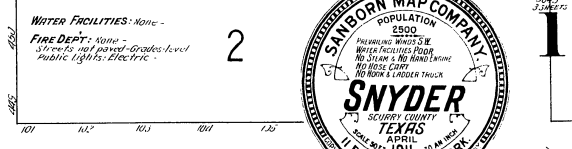
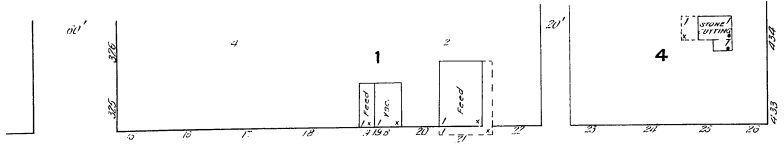


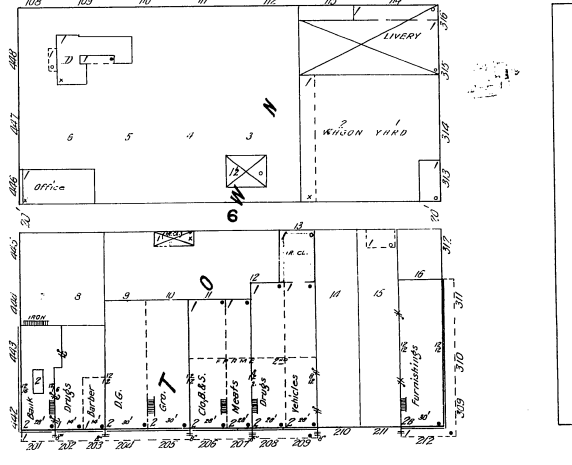
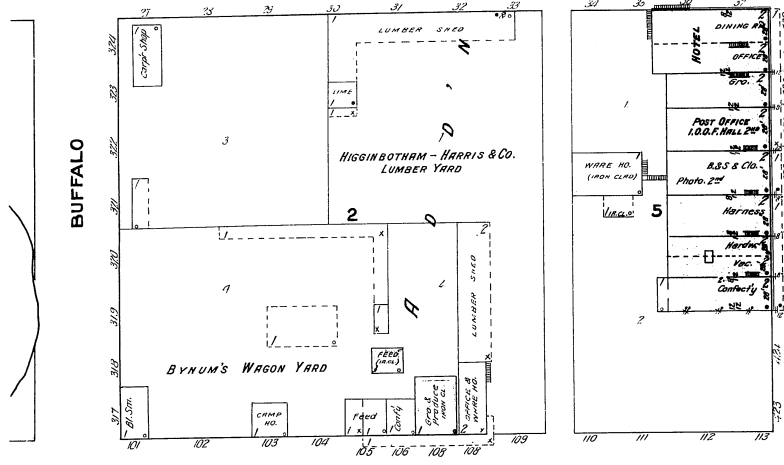


WATER FACILITIES: None
 FIRE DEPT: None
 Streets: not paved - Grades level
 Public Lights: Electric



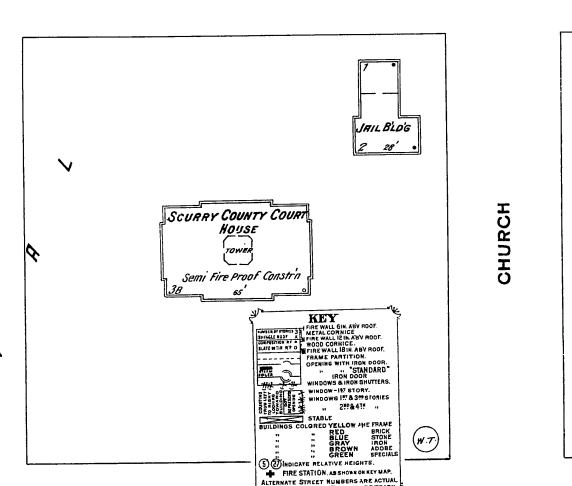
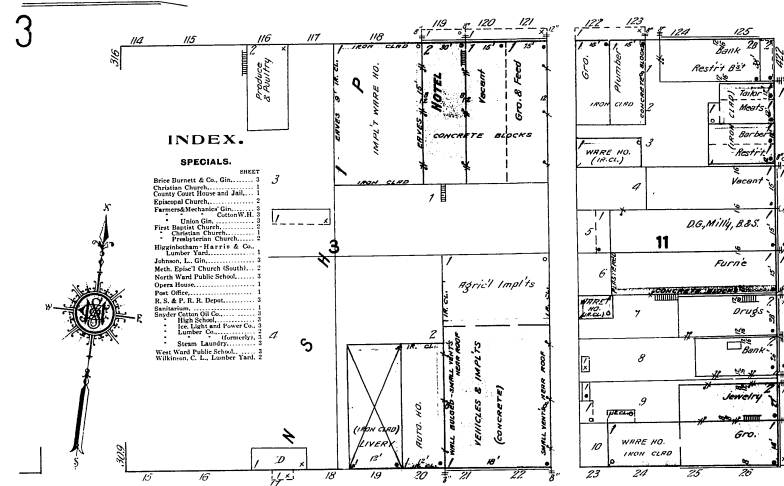
GREEN

NORTH



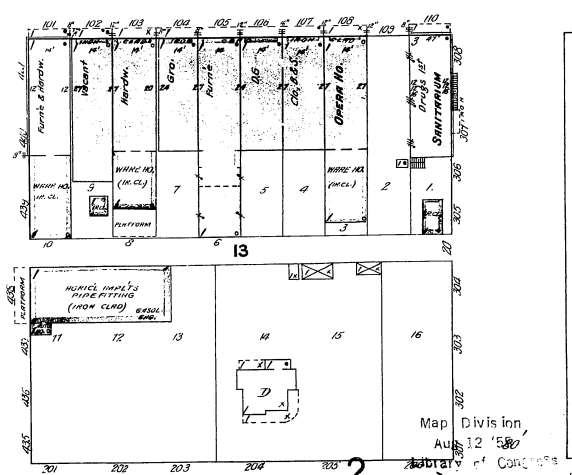
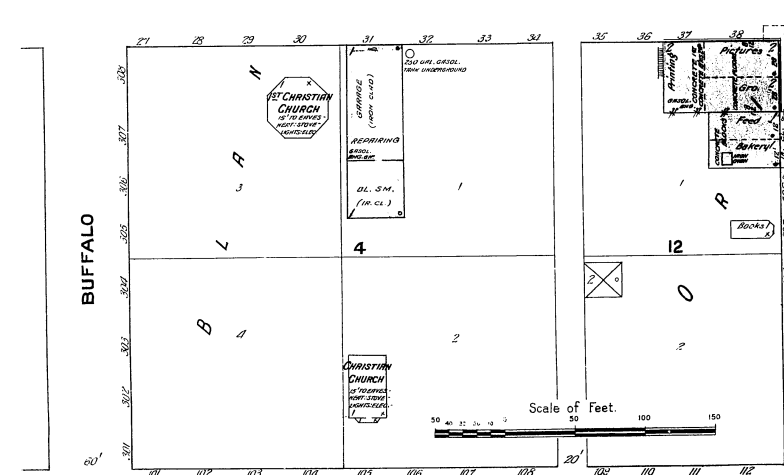
WILMETH

PLAID



S. PLAZA

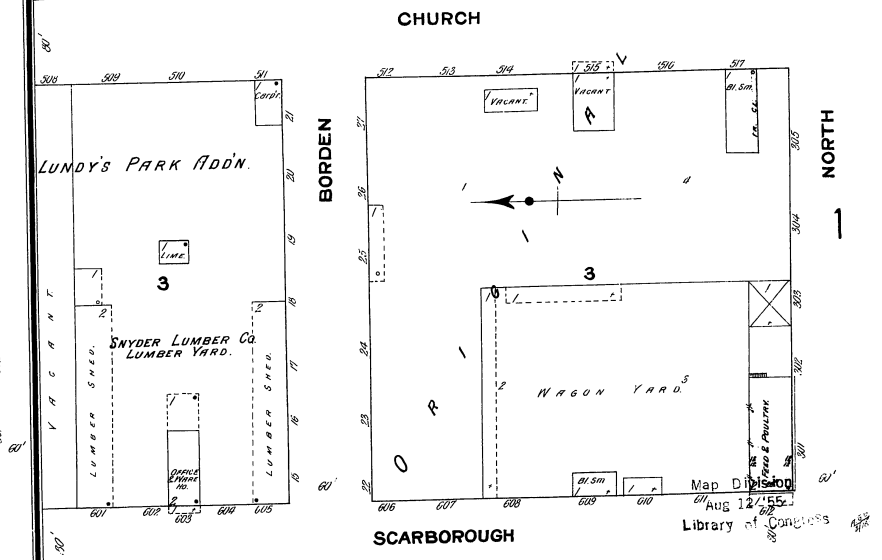
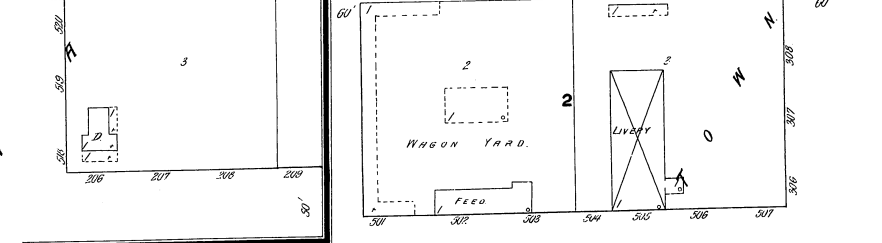
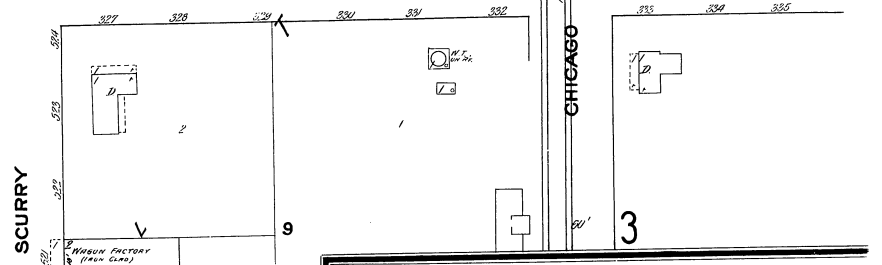
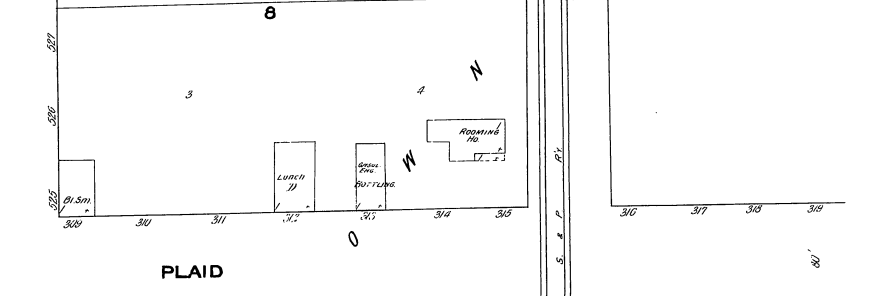
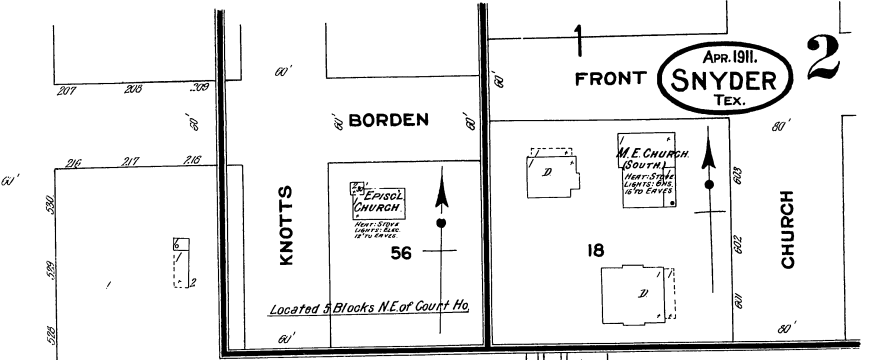
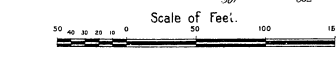
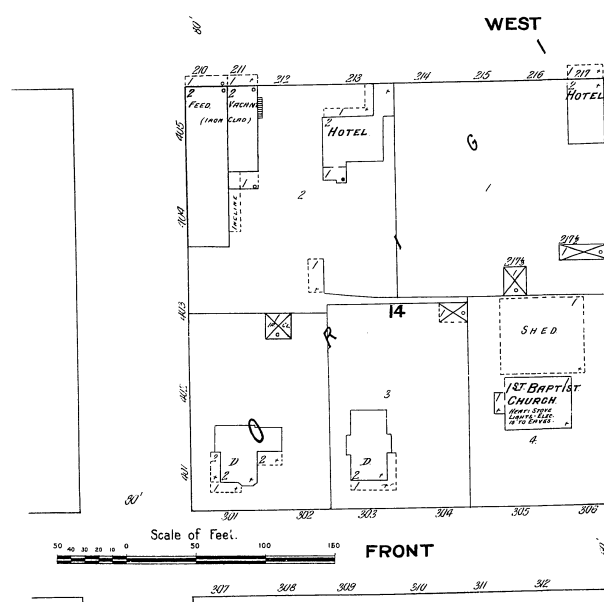
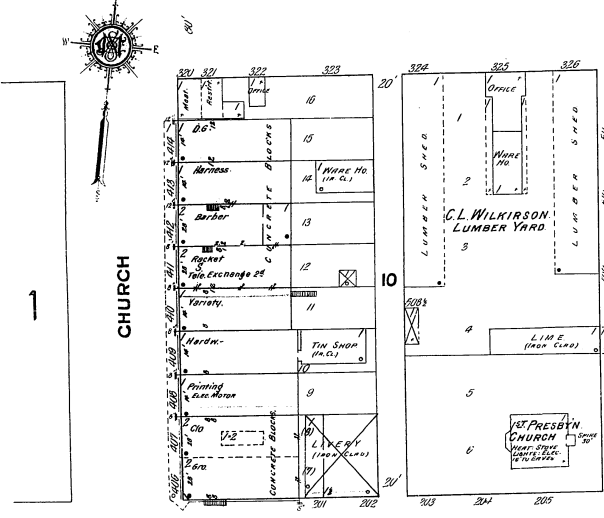
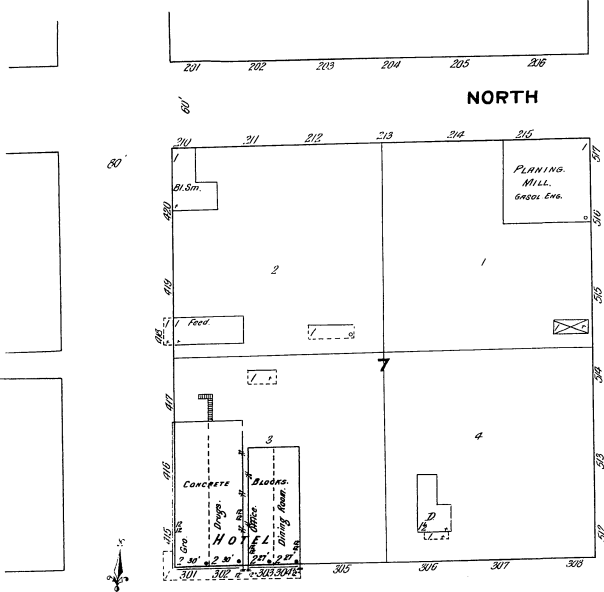
WEST



FAUGHT

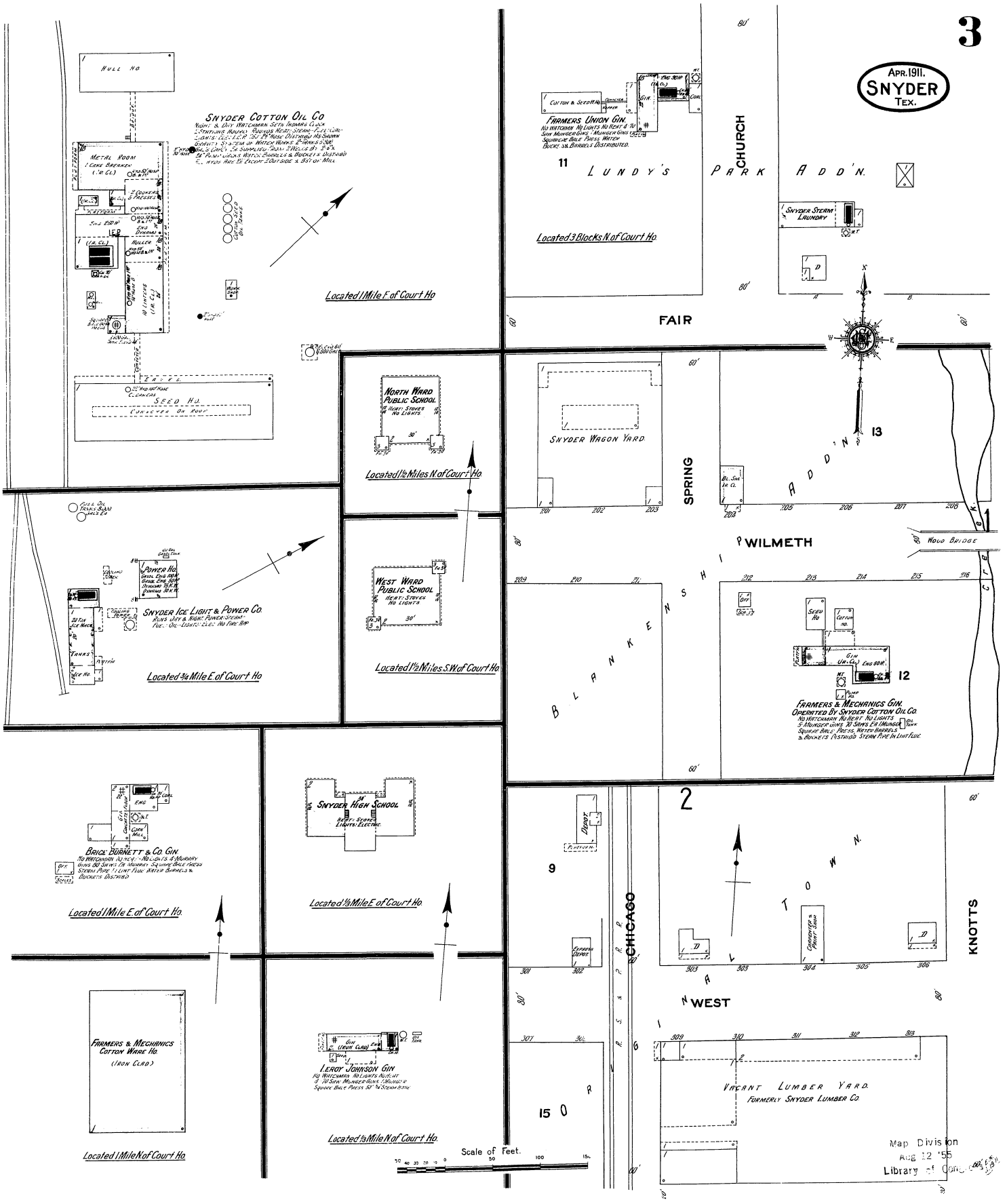
FRONT

Map Division
 August 12 1914
 City of Commerce



Map Div. 100
Aug 12/1911
Library of Congress

APR. 1911.
SNYDER
TEX.



Map Division
AUG 12 '55
Library of Congress